



MAXIMA®



ONLY FOR REAL PROFESSIONALS



Colonna 300 - Use and maintenance booklet

SERIAL NUMBER M.....

USE AND MAINTENANCE MANUAL

“COLONNA 300”

INDEX

INTRODUCTION	2
SAFETY INSTRUCTIONS	3
MACHINE DESCRIPTION	5
OPERATING INSTRUCTIONS	8
MAINTENANCE	9
WARRANTY	11
TECHNICAL DATA SHEET	11
SPARE PARTS	12
DECLARATION OF CONFORMITY	19

CAUTION! Keep this BOOKLET with care at all times

INTRODUCTION

The use and maintenance manual for the support, collects all the information related to the optimal use of the machine under conditions that promote the operator's safety.

This manual contains a lot of **IMPORTANT** information for the installation, use, storage and maintenance of the machine.

For more information you can always contact the MAXIMA's offices at the following numbers:

Tel: 0522-968011

Fax: 0522-967536

This manual should be read carefully by any operator using the column for the first time. This can prevent dangerous situations at the workplace.

This booklet is valid only for Colonna 250. The model is indicated on the support plate.

This booklet is written in accordance with EC regulations and related technical standards. See also the EC declaration provided on page 19

SAFETY INSTRUCTIONS

INTRODUCTION

The following safety instructions should be followed when using the support to reduce the risk of fire, short circuit and physical injury.

Before using the machine, please read the following information carefully and pay attention to the warnings given.

SAFETY

Do not bring water near electrical devices.

Prevent drips and any water spills or inadvertent disconnections of pipes containing liquid substances. Be careful of cold water while cutting at a height. Carefully remove cold water for example with a professional vacuum cleaner. Dry electrical wiring, plugs, etc.....

Consider the work environment.

Look carefully at what you are about to do. Use common sense. Do not use the machine when tired or distracted. Make sure you can always turn off the motor in an emergency. Do not use the machine if the ON/OFF button does not work properly.

PERSONAL PROTECTION

Proper clothing

Do not wear loose clothing or jewellery because they can hinder body movements. When working outside, rubber shoes are recommended instead of slippery footwear. Wear protection for long hair.

Use of personal protective equipment

Wear a hard hat against any falling pieces, protective gloves against sharp objects and goggles against concrete chips. Use a mouth and nose mask if necessary. The use of earplugs is mandatory for noise above 90dB(A).

SUPPORT

Use the support correctly and do not force it

Use the support only for the purposes for which it is intended. It is better and safer to use core bits with the appropriate diameter and the corresponding recommended speed.

Avoid unintended starts

Place the motor button in the OFF position and unplug the machine when not in use or during maintenance work or replacement of accessories.

Check whether the machine is in the OFF position before plugging the power cable into the socket.

Carefully service the machinery

Carefully store the machinery and keep it clean for better and safer performance. Follow the maintenance instructions carefully. Keep handles dry of oils and grease at all times.

Safeguard the support from damage

Check the alignment and edge of moving parts. Breakages or other such conditions can affect normal use of the machinery.

Use of accessories

Use of accessories not specified in this manual may pose a risk or cause physical injury.

Use of electric cords or cables

Use only undamaged extension cords sufficiently long to work comfortably outdoors. Uncoil the power cord completely to prevent it from overheating. Do not bring the machine too close to the power cord or pull the cord to remove the plug from the power socket. Protect the power cord from sources of heat, oil and sharp edges.

Have the machinery repaired only by skilled operators

Electrical machinery must be up to safety standards, and only skilled operators can perform certain repair operations.

THE WORKPLACE

Cleanliness of the workplace

A cluttered environment can cause damage. Do not allow animals or people not involved in the work to enter the workplace because they may come into contact with the machinery. Collect cement pieces when drilling. When the machine is not in use, it should be kept in a dry place and out of the reach of children.

Safety in the workplace

Mount accessories properly to prevent them from coming loose or falling off. Check that all keys have been removed from the machine at the time of use. Ensure that all safety guards are properly installed to prevent damage. Maintain proper balance and a proper support point every time you use the machine.

Consider the situation of the work environment

Keep the workplace clean. Pay attention to all cables (underground and underfloor), pipes and rebars in the working position. Do not use electricity in the presence of flammable liquids or gases or in wet and rainy conditions.

EXPLANATION OF SYMBOLS USED



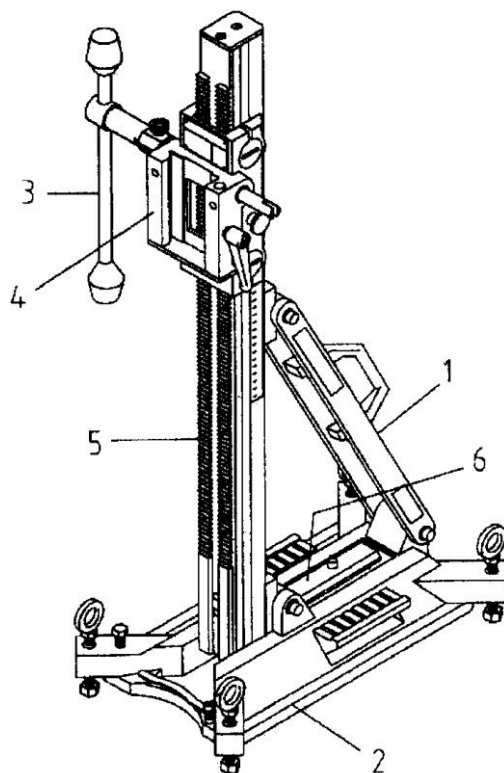
IGNORING IT CAN CAUSE SERIOUS PHYSICAL DAMAGE!

COLUMN DESCRIPTION

COMPOSITION OF THE MACHINE

The column consists of the following parts:

1. Stabilization rod
2. Base
3. Winch
4. Motor drill support
5. Column
6. Block for vacuum pump



FUNCTIONS

General

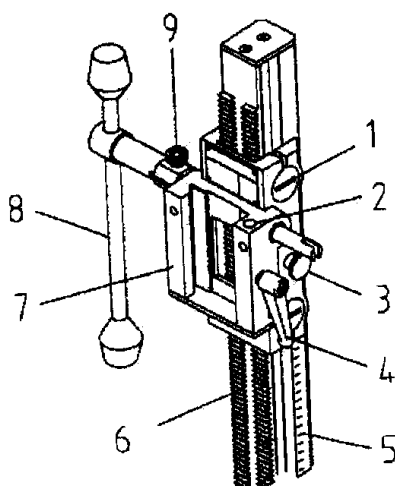
Colonna 300 is designed for the use of diamond core bits. It can be used to drill concrete, asphalt and other similar stones. The maximum diameter of the core bits that can be used with this column is 300 mm.



The column should never be used for purposes other than those mentioned above

Motor drill support

The motor drill support (7) provides the motor itself and the diamond core bit with stable control while drilling. The drilling depth (5) and inclination are indicated on the column (6). The support is equipped with a brake (3) to secure the column in the highest position, a plastic threaded screw (1) and two spirit levels (2). Use the handle (4) to secure the motor drill. Colonna 300 is suitable for both right- and left-handed users: the winch side (8) can be placed either to the right or left of the motor drill support.



Base

The base provides stability and levels the column, which can be placed on the ground or vertically against a wall in two ways:

- Using a plug with a bush
- Using the vacuum (generated with a vacuum pump) between the wall and the base.

Bolts located on the base are used to level the base on the ground or on the wall. To level on the ground or wall use the air level located on the motor drill support.

Vacuum can be used by pressing the vacuum valve located below the handle.

Centring

Once ascertained through drawings, tests with instrumentation suitable for detecting under-wall pipes and cables, that the coring area is clear, mark the drilling position.

With a drill suitable for the material to be drilled, place a 15x50mm plug with M12 thread at a distance from the core drilling point of 350mm plus the distance of the axis of the motor drill from the support:

Transport

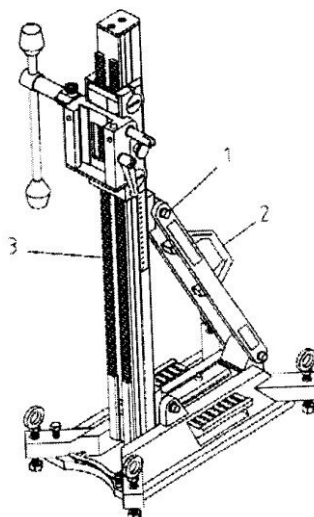
Colonna 250 is easily carried by the handle (9) located on the base. It weighs only 8 kg and is very easily transportable.

Column inclination

The column can be variously tilted to a maximum of 45° by loosening bolts (7), (8) and (9). To fix it in the desired position, tighten bolts (8) and (9).

Core drilling motor

A stand-mounted core drill can be used with colonna 300 via the motor plate. It is important to take into consideration the diameter and rpm of the core bit. Manual coring machines can be mounted with a special motor support.



OPERATING INSTRUCTIONS

POSITIONING OF THE MACHINE

Support anchorage

The support can be anchored in two ways:

1. Anchorage with Plug

- Insert an M12 plug into the wall or floor.
- Remove the vacuum block.
- Position the base and fix it with an M12 bush.

A telescopic extension can be used for additional anchorages

2. Anchorage with vacuum pump

(Do not use with porous materials, plasterboard walls, linoleum.)

- Thoroughly clean the area where the column base is placed.
- Install the vacuum seal
- Place the column base on the floor or against the wall
- Connect the vacuum pump to the valve on the crankcase.
- Turn on the vacuum pump and let it run until vacuum is reached.
- Turn off the vacuum pump only when the work is finished.

Levelling and inclining the column

Level the base by means of the bolts located on the same by checking the levels. If you need to drill a hole in a corner, loosen the top two bolts, tilt the column and tighten them.

Mount the motor drill and the diamond core bit

- Slide the support to the highest position : it will automatically lock.
- The support can be unlocked by pulling the swivel button located on it.
- Screw the motor plate to the motor and secure it carefully.
- Screw the diamond core bit to the motor drill chuck.
- Insert a hose to the water valve and connect it to the water source. Open the water tap (Do not use dirty water).
- Always drain the water so that it flows out of the hose. Electrical cables and plugs must absolutely not come in contact with water. When drilling overhead or on walls, always use a water catcher to prevent water spillage.

Always follow these safety rules and keep the booklet handy.

MAINTENANCE

PREVENTIVE MAINTENANCE

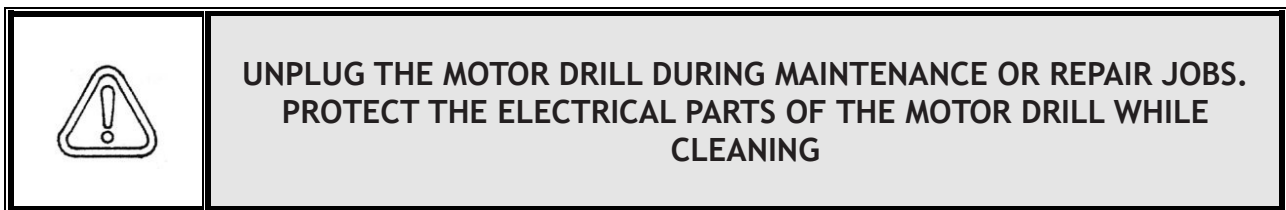
Regardless of preventive maintenance, operator safety and machine life can be enhanced by following the tips below:

- Handle the machine with care
- Keep the machinery clean
- Carry the machine in wooden packaging
- Oil the gears of the machinery, and when not used for a long time, store it in a dry place.

Transport the machine in the core drill boxes (optional).

MAINTENANCE

In general, to ensure safety for the operator and long service life for the machinery, careful maintenance is required, i.e., cleaning, checking and lubricating the gears.



The machinery needs little maintenance. The following is a maintenance table of the purchased product.

FREQUENCY	JOB	NOTES
After each drilling	Clean: <ul style="list-style-type: none"> • the guide • quick release system 	With water With water and lubricating oil
Weekly	General control: <ul style="list-style-type: none"> • failures 	
	Control of the slide block: <ul style="list-style-type: none"> • adjustment • wear 	Adjust if necessary Replace if necessary
Periodically (once a month)	Lubricate: <ul style="list-style-type: none"> • rack • levelling bolts 	
Annually	Support overhaul	Contact Maxima SpA

REPAIR AND REPLACEMENT OF SLIDING BLOCKS

Sliding block repair

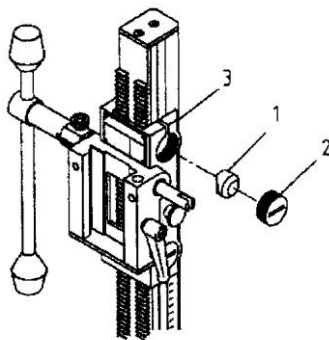
Due to the friction between the block (1) and the column, the sliding block tends to wear. After a while this forms a "gap" between the block and the slide in the column.

The vacuum can be removed:

1. loosening the screw (3) with an Allen wrench
2. properly tightening the adjustment screw (2)
3. putting the screw (3) back in again

Replacement of the sliding block

When the sliding block (1) cannot be repaired any more, it must be replaced. Remove the two screws (3 and 2) and replace the four sliding blocks.



WASTE DISPOSAL

Please safeguard the environment when disposing of the waste.

WARRANTY

Period

The Colonna 300 is covered by a 12-month warranty from the date of purchase

Contents of the warranty

Products found to be defective before or at the beginning of use will be repaired or replaced free of charge. Transportation costs will always be borne by the customer.

The **Maxima** warranty does not apply when:

- the machine is overloaded
- the column is used for unintended purposes
- maintenance is not performed
- the operator does not follow the instructions in the instruction manual
- the column is used by unauthorised personnel
- the column is repaired without the use of Maxima accessories
- consumables

Warranty conditions

When necessary we may ask you to send the column back to us. Transportation costs will be borne by you. To perform a repair, we need a letter with the description of the problem by fax to No: **0522/967536**.

Make sure the column is packed with sufficient protective materials to prevent damage during transport.

Repairs covered by warranty are performed free of charge. The warranty period cannot be extended after the repair has taken place.

Repairs will be made using original Maxima spare parts.

TECHNICAL DATA SHEET

DIMENSIONS

Length	465 mm
Width	275 mm
Height.....	1320 mm
Weight	18 kg

TECHNICAL DATA

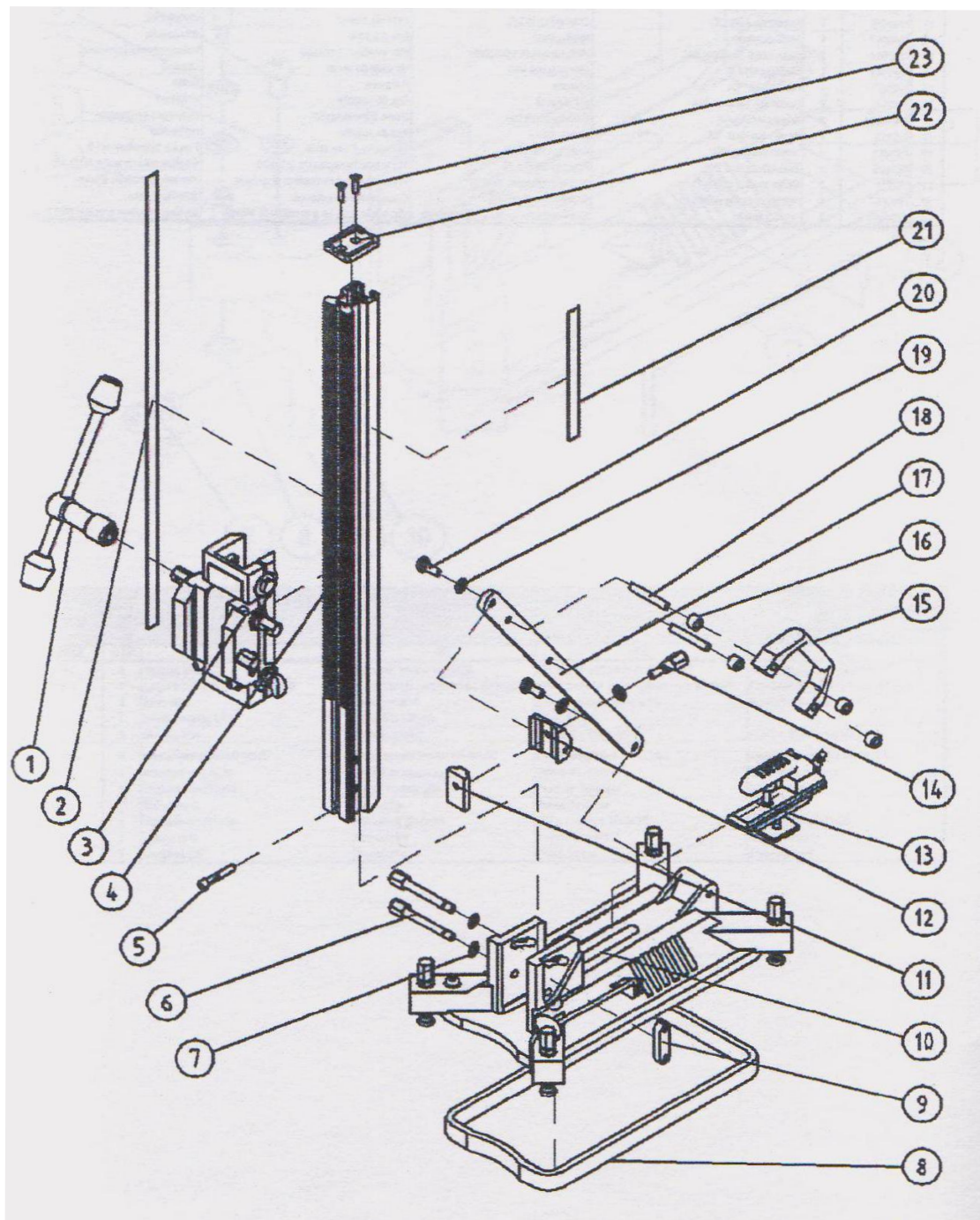
Motor support mounts a water core drill.....	
Diamond core bit with water catcher	161/200 mm
Diamond core bit without water catcher	Ø 161/300 mm
Length of the diamond core bit	Max 600 mm

SPARE PARTS

When ordering spare parts and accessories we need the following information to provide them to you correctly:

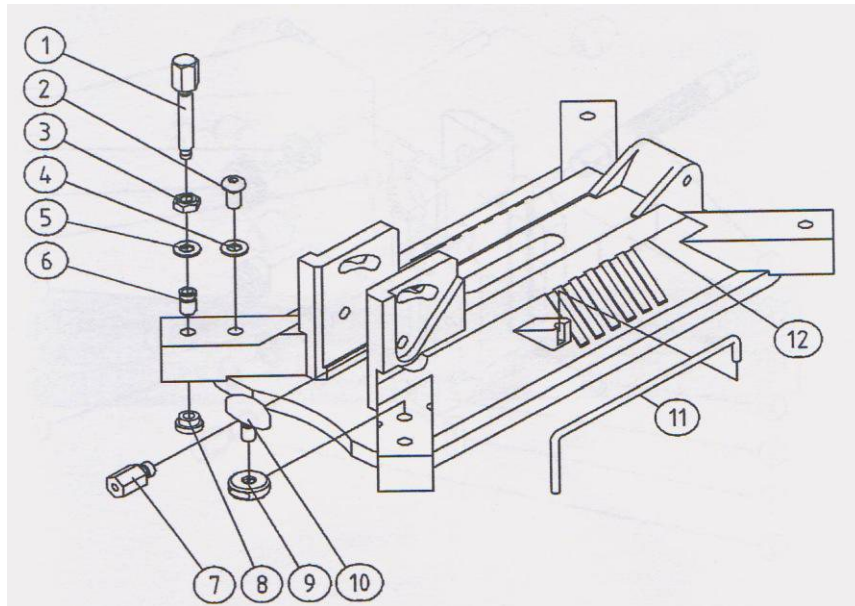
- Type of machine and serial number found on the support base.
- You can find the number of the article to be replaced in the exploded views below. Colonna 300 has a 12-month warranty from the date of purchase

EXPLODED VIEW COLONNA 300



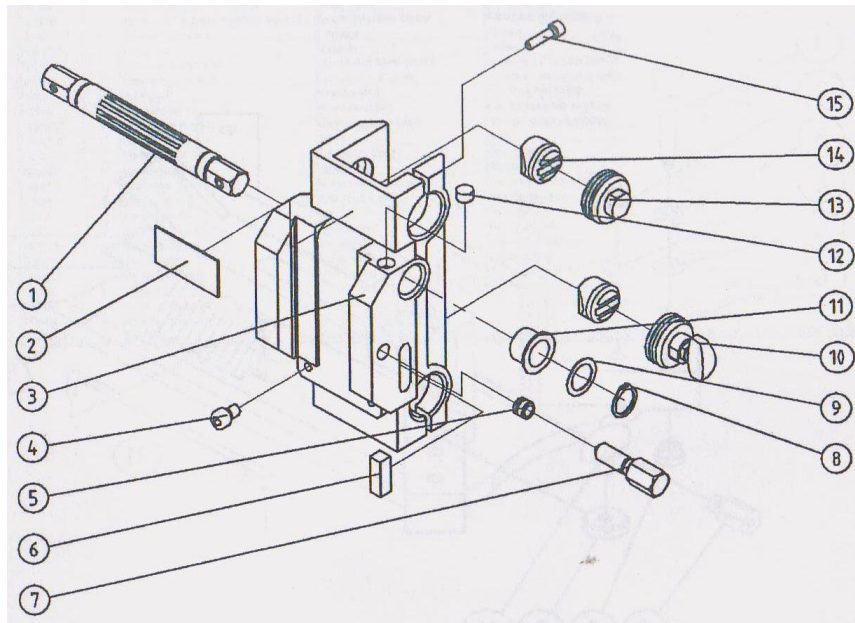
COLONNA 300			
No	MAXIMA No.	DESCRIPTION	Q.TY
01	791503X	Complete winch	1
02	792209	Depth indication sticker	1
03	792002-X	Motor support	1
04	7980031	Gear rack	1
05	FBC060	Screw M8x50	1
06	7980025	Allen screw L.90mm	2
07	FS10	M10 washer	3
08	792105	Vacuum gasket	1
09	7980026	Base locking plate	1
10	792001-X	Base	1
11	7980040	Rack locking plate	1
12	7980087	Locking plate	1
13	7980010	Vacuum accessory	1
14	7980041	Allen screw	1
15	792207	Handle	1
16	792213	Nut	4
17	7980039A	Tilt bar	2
18	792212	Tilt bar bracket	2
19	FS10K1	M10 washer	4
20	FB1025	Allen screw M10x25	4
21	792210	Angular indication sticker	1
22	7980035	Rack cap	1
23	FF3630	Screw M6x30	2

EXPLODED VIEW OF BASE



BASE			
No	MAXIMA No.	DESCRIPTION	Q.TY
01	7980028	Hexagon head screw M10x70	4
02	FBE1220	Cylinder screw M10x20	1
03	FM10	Hex lock nut M10	4
04	FS10K1	Nylon washer M10	1
05	FS10	M10 washer	4
06	FG1020	Bushing M10X150	6
07	7980027	Rack locking nut	1
08	F42611	Column foot	4
09	7980042	Fixing nut	1
10	F40013	Knob M10x20	1
11	7980043	Position viewer	1
12	7980082A	Complete base	1

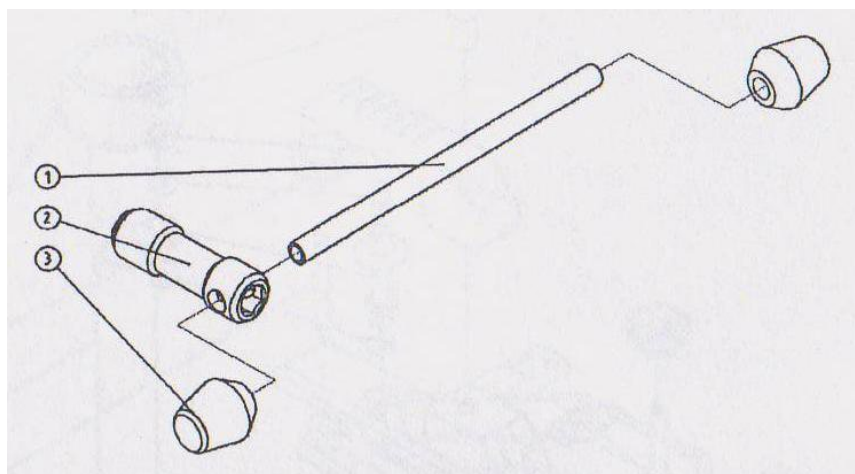
EXPLODED VIEW MOTOR SUPPORT



MOTOR SUPPORT

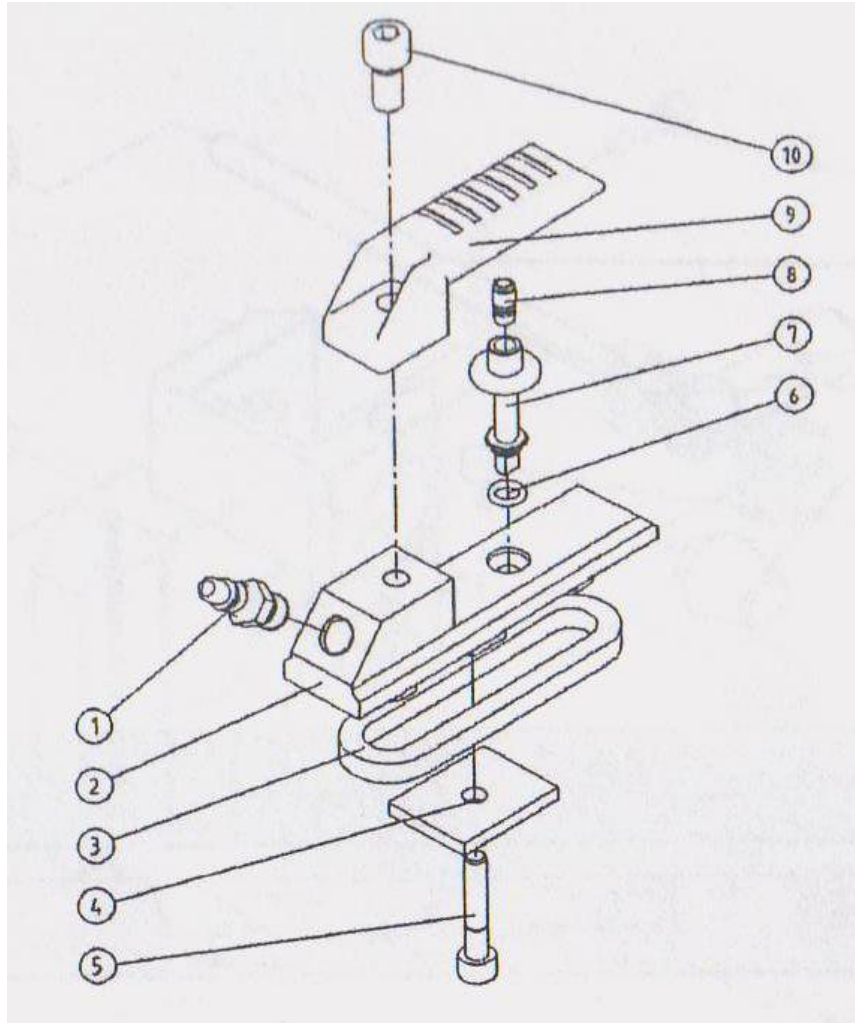
No	MAXIMA No.	DESCRIPTION	Q.TY
01	792003-X	Complete support pin	1
02	7980062	Metal label	1
03	7980084	Motor support	1
04	FBC012	M8x12 cylinder head screw	2
05	FG1010	Bushing M10x150	1
06	A5026	Spirit level	1
07	7980054	Hexagonal pin	1
08	FR020	Seeger 20	2
09	FS20P3	Washer 20x28x0.3	2
10	7980009	Full adjustment knob	1
11	ET019A	Bushing	2
12	F1066	Spirit level	1
13	7980023	Adjusting nut	1
14	792301	Nylon mat	4
15	FBC825	M6x25 cylinder head screw	2

WINCH EXPLODED VIEW



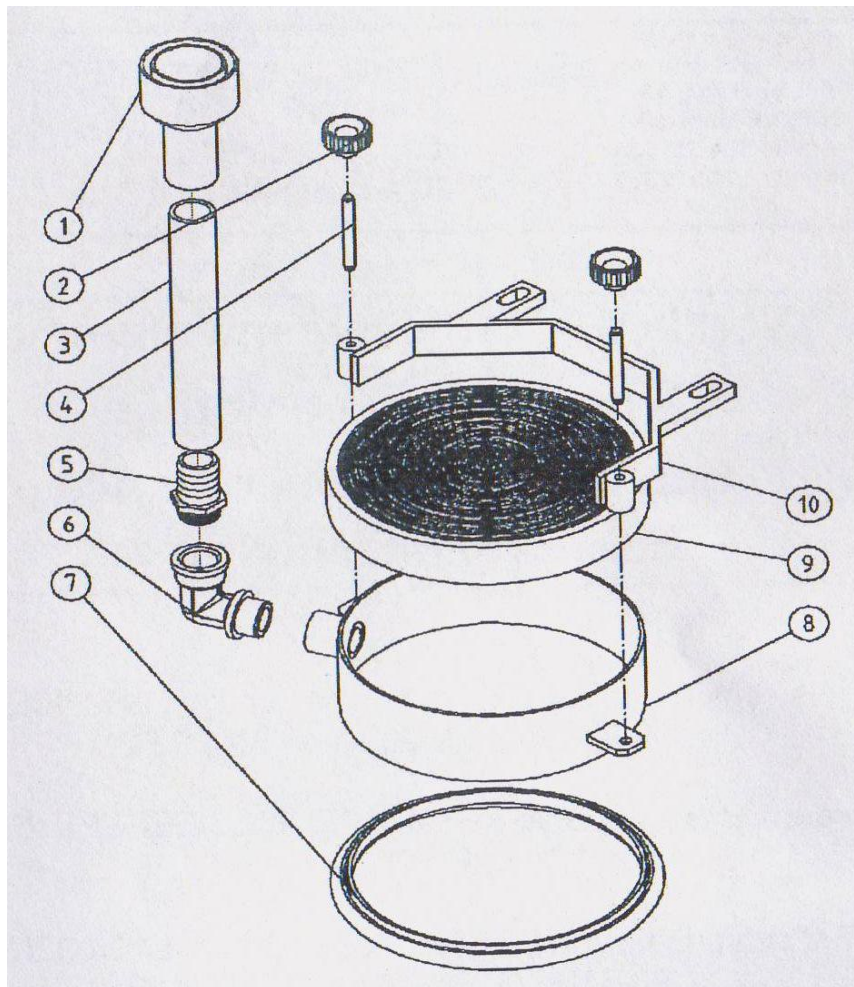
WINCH			
No	MAXIMA No.	DESCRIPTION	Q.TY
01	792305	Lever	1
02	7980045	Knob	1
03	F40581	Conical cap	2

EXPLODED VIEW OF VACUUM ACCESSORY




VACUUM ACCESSORY			
No	MAXIMA No.	DESCRIPTION	Q.TY
01	F43222	Nyples	1
02	7980085	Vacuum accessory	1
03	792500	Vacuum gasket	1
04	7980044	Plate	1
05	FBC040	Screw M8x40	1
06	E4008A	O-ring	1
07	791103	Gasket	1
08	792104	Lever	1
09	7980086	Handle	1
10	FBC120	Screw M10x20	1

EXPLODED VIEW OF WATER COLLECTOR



WATER COLLECTOR			
No	MAXIMA No.	DESCRIPTION	Q.TY
01	7011	Connection nozzle	1
02	F40214	Knob	2
03	C3019	Rubber hose	1
04	792400	Threaded rod	2
05	F43242	Connection	1
06	F45141	Curve	1
07	7107	Gasket	1
08	792044	Ring	1
09	70092	Rubber	1
10	792045	Ring support	1

Declaration of Conformity 	We declare under our sole responsibility that this product complies with the following EC directives 2006/42 EEC 89/392/EEC and amendments. 97/23 EEC EN291-1, EN292-2, EN292-2/A1, EN60204.1
Type Model	COLONNA 300 COL 300 INC
Serial Number	
Distributor	MAXIMA SpA Via Matteotti, 6 42028 Poviglio (RE) Tel: 0522-968011 - Fax: 0522-967536



Via Matteotti, 6 - 42028 Poviglio (RE)
 Tel: 0522-968011 - Fax: 0522-967536



CEO
 i.t. Mirco Dall'olio



Maxima SpA- Via Matteotti, 6 - 42028 Poviglio (Re) Italy
Tel: 0039 0522 968011 - Fax: 0039 0522 967536
info@maxima-dia.com - www.maxima-dia.com